

CRI≥90 SMD5630 LED Flexible Strips

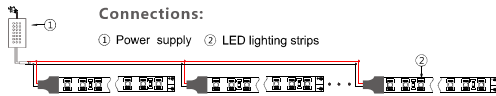


Specifications:

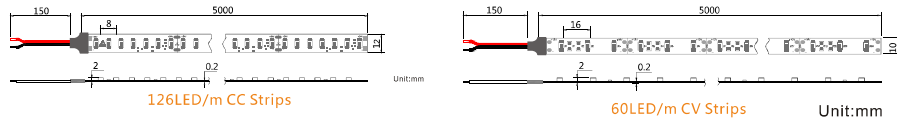
- LED: CRI≥90 SMD5630
- Constant current version and constant voltage version
- LED Quantity: 60LED/m, 70LED/m, 126LED/m
- Power: 14.4W/m, 15W/m, 22W/m
- Voltage: DC12V, DC24V
- Color: Warm White, Nature White, Pure White
- Waterproof: Non-Waterproof, IP67 Version
- Cutting: 7LED cutting for DC24V version and 3LED for Cutting DC12V Version

Applications:

- Cove Lighting
- Architectural decorative lighting
- Archway, canopy and bridge edge lighting
- Auditorium walkway lighting
- Backlighting for signage letters
- Channel letter lighting



Dimension Drawings:



Model No.	LED Type	CC/CV	LED Qty	Power (W/m)	Voltage	Light Efficiency	CRI(Ra)	PCB Width	Water-proof	Color	(CT:K)	Lumen (lm/m)
C143-F5630A63SA-W-24C	SMD5630	CC Version	126	22W	24V	105lm/W	≥ 90	12mm	No	<input type="checkbox"/> Warm White	2500-3100K	2000-2100lm
<input type="checkbox"/> Nature White										4000-4500K	2100-2200lm	
<input type="checkbox"/> Pure White										6000-6500K	2200-2300lm	
C143-F5630X35SA-W-24C	SMD5630	CC Version	70	15W	24V	105lm/W	≥ 90	10mm	No/IP67	<input type="checkbox"/> Warm White	2500-3100K	1300-1400lm
<input type="checkbox"/> Nature White										4000-4500K	1400-1500lm	
<input type="checkbox"/> Pure White										6000-6500K	1500-1600lm	
C143-F5630X30SA-W-12C	SMD5630	CC Version	60	14.4W	12V	100lm/W	≥ 90	10mm	No/IP67	<input type="checkbox"/> Warm White	2500-3100K	1100-1200lm
<input type="checkbox"/> Nature White										4000-4500K	1200-1300lm	
<input type="checkbox"/> Pure White										6000-6500K	1300-1400lm	
C143-F5630X30SA-W-12/24	SMD5630	CC Version	60	14.4W	12V/24V	100lm/W	≥ 90	10mm	No/IP67	<input type="checkbox"/> Warm White	2500-3100K	1100-1200lm
<input type="checkbox"/> Nature White										4000-4500K	1200-1300lm	
<input type="checkbox"/> Pure White										6000-6500K	1300-1400lm	

Remark: X stands for waterproof version, A stands for non-waterproof version, C stands for IP67 waterproof version. CC means constant current version, CV means Constant Voltage Version

CRI≥90 SMD3020 LED Flexible Strips

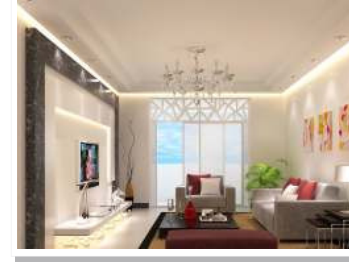


Specifications:

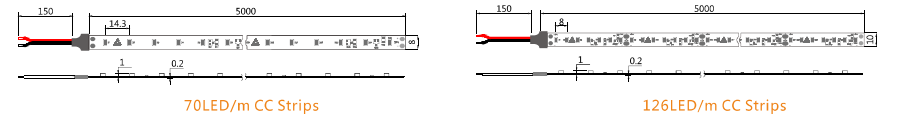
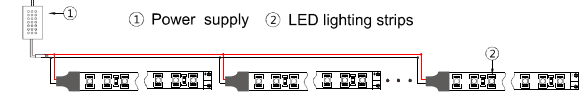
- LED: CRI≥90 SMD3020
- Constant current version and constant voltage version
- LED Quantity: 70LED/m, 126LED/m
- Power: 15W/m, 22W/m
- Voltage: DC12V, DC24V
- Color: Warm White, Nature White, Pure White
- Waterproof: Non-Waterproof, IP67 Version
- Cutting: 7LED cutting

Applications:

- Cove Lighting
- Architectural decorative lighting
- Archway, canopy and bridge edge lighting
- Auditorium walkway lighting
- Backlighting for signage letters
- Channel letter lighting



Connections:



Model No.	LED Type	CC/CV	LED Qty	Power (W/m)	Voltage	Light Efficiency	CRI(Ra)	PCB Width	Water-proof	Color	(CT:K)	Lumen (lm/m)
C143-F3020A63SA-W-24C	SMD3020	CC Version	126	22W	24V	100lm/W	≥ 90	10mm	No	<input type="checkbox"/> Warm White	2500-3100K	1800-1900lm
<input type="checkbox"/> Nature White										4000-4500K	1900-2000lm	
<input type="checkbox"/> Pure White										6000-6500K	2000-2200lm	
C143-F3020X35SA-W-24C	SMD3020	CC Version	70	15W	24V	100lm/W	≥ 90	8mm	No/IP67	<input type="checkbox"/> Warm White	2500-3100K	1250-1300lm
<input type="checkbox"/> Nature White										4000-4500K	1350-1400lm	
<input type="checkbox"/> Pure White										6000-6500K	1450-1500lm	

Remark: X stands for waterproof version, A stands for non-waterproof version, C stands for IP67 waterproof version. CC means constant current version, CV means Constant Voltage Version